

**PLA6457**

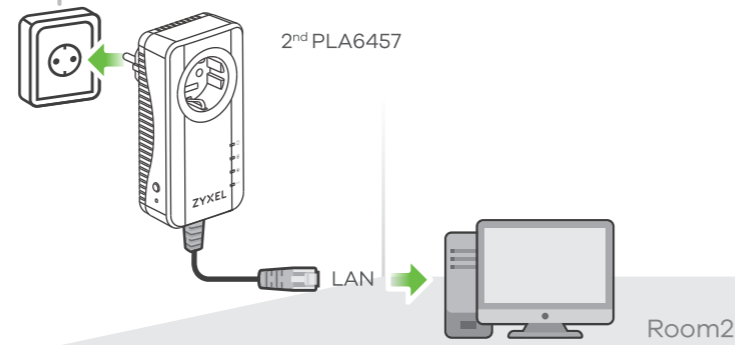
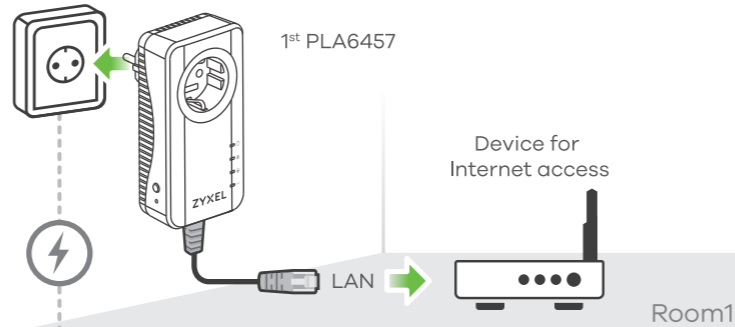
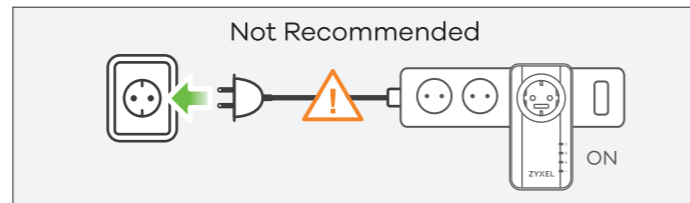
G.hn 2400 Mbps Wave 2 Powerline  
Pass-thru Gigabit Ethernet Adapter



**Quick Start Guide**

ENGLISH | DEUTSCH | ESPAÑOL | FRANÇAIS  
ITALIANO

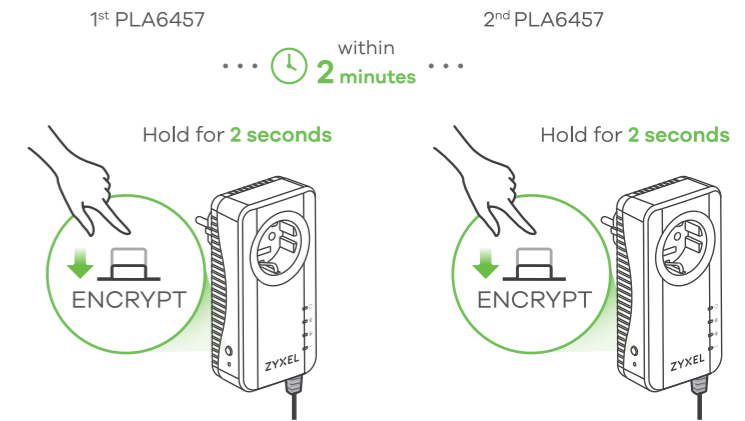
**1 Hardware Installation**



**2 Check LED Lights**

	<b>Green On</b> - Power is on. <b>Blinking</b> - Enter power saving mode. <b>Off</b> - Power off.
	<b>Green On</b> - More than 80 Mbps - Best. <b>Amber On</b> - 20 to 80 Mbps - Good. <b>Red On</b> - 0 to 20 Mbps - see Troubleshooting. <b>Off</b> - No connection between PLA devices. <b>Blinking</b> - Sending or receiving data to/from a connected PLA.
	<b>Green On</b> - Encrypted pairing mode. <b>Blinking</b> - Encrypt in processing. <b>Off</b> - No encrypted pairing.
	<b>Green On</b> - The Ethernet connection is up. <b>Blinking</b> - Sending/receiving data at 10/100/1000 Mbps. <b>Off</b> - Ethernet connection is not ready.

**Optional More Secure**



**Troubleshooting**

- If the power light does not come on, make sure the PLA is turned on.
- If an Ethernet light does not come on, please check the Ethernet cable.
- If the Powerline light does not turn on, this means there is no communications between PLA devices. This can be due to other PLA devices not being plugged in to electrical outlets yet, PLA device is possibly in low power mode or there is an issue on the power circuit. Make sure that the PLAs are on the same power circuit. Test by connecting PLAs into nearby outlets. Make sure that you do not have a power meter between them.
- To minimize interference, move PLAs away from high powered electrical devices such as refrigerators, air-conditioners, microwave ovens, etc.
- When securing the Powerline network, make sure not to press the **ENCRYPT** buttons on both PLAs for more than 5 seconds. If the process fails, press the **RESET** button on both PLAs over 10 seconds to reset to factory setting, then try to reconnect again.
- See the User's Guide for more troubleshooting tips.

**Warranty Card**



Thank you for purchasing a Zyxel product. Zyxel has a reputation for delivering high quality, high performance products and services to our customers. We recommend that you now visit the Zyxel website and register your product online. This will mean you can receive the latest firmware, drivers and product related information. If you still have further questions or enquiries related to the product, please contact our subsidiaries worldwide. Please note that warranty terms may vary by region. Full detailed information is available on our website, here: [http://www.zyxel.com/support/warranty\\_information.shtml](http://www.zyxel.com/support/warranty_information.shtml)

**Purchase Information**

Zyxel Product Name: \_\_\_\_\_

Hardware Serial Number: \_\_\_\_\_

Date of Purchase: \_\_\_\_\_

(In certain countries, the warranty will be validated with seller's signature and stamp):

- EN** For better performance, it is recommended not to plug a PLA into a power extension cord. Connect one PLA to a device for Internet access, such as a router. Connect the other PLA to a device requiring Internet over Powerline.
- DE** Für eine bessere Leistung wird empfohlen, einen PLA nicht mit einem Verlängerungskabel zu verbinden. Verbinden Sie unseren PowerLine Adapter (PLA) mit einem Gerät für den Internetzugang und einen anderen mit einem Gerät, das Internet über Powerline bezieht.
- ES** Para un mejor rendimiento, se recomienda no enchufar un PLA en un cable alargador. Conecte un PLA a un dispositivo para acceso a Internet y otro a un dispositivo que necesite Internet por línea eléctrica.
- FR** Pour de meilleures performances, il est recommandé de ne pas brancher un PLA dans une rallonge électrique. Connecter une PLA à un appareil pour l'accès internet et une autre pour un appareil passant par une ligne électrique pour internet.
- IT** Per ottenere un rendimento migliore si consiglia di non collegare un'unità PLA con un cavo di prolunga. Connettere uno dei PLA al router con accesso ad Internet, e l'altro al dispositivo che necessita di accesso a Internet tramite Powerline.

- EN** The Powerline light indicates how good your Powerline connection is.
- DE** Das Powerline-Licht zeigt an, wie gut die Powerline-Verbindung ist.
- ES** La luz Powerline indica la calidad de la conexión de su línea eléctrica.
- FR** La lumière Powerline indique la qualité de votre connexion électrique.
- IT** Il led Powerline indica la qualità della connessione tramite Powerline.

**Support Information**

- USA** + 1 800 255 4101 | [support@zyxel.com](mailto:support@zyxel.com)
- EU** <https://support.zyxel.eu>

See the User's Guide at [www.zyxel.com](http://www.zyxel.com) for more information, including customer support and safety warnings.

**EU Importer**  
Zyxel Communications A/S  
Gladsaxevej 378, 2. th. 2860 Søborg, Denmark  
<https://www.zyxel.com/dk/da/>

**UK Importer**  
Zyxel Communications UK Ltd.  
2 Old Row Court, Rose Street, Wokingham,  
RG40 1XZ, United Kingdom (UK)  
<https://www.zyxel.com/uk/en/>

**US Importer**  
Zyxel Communications, Inc  
1130 North Miller Street Anaheim, CA 92806-2001  
<https://www.zyxel.com/us/en/>



**PLA6457**

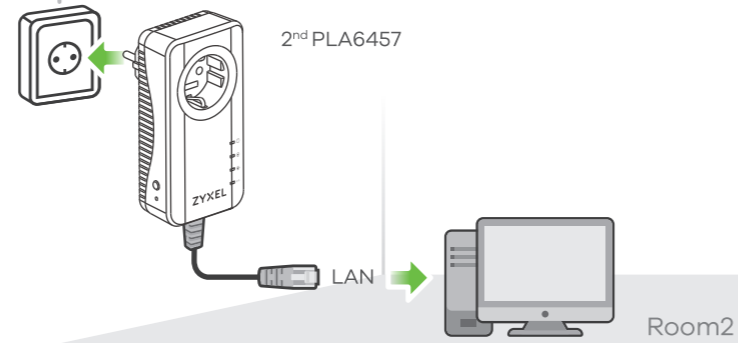
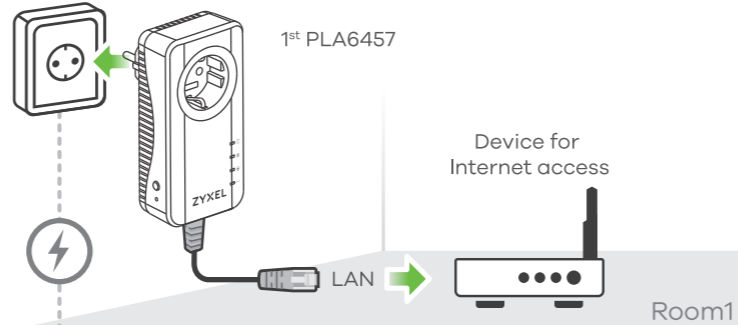
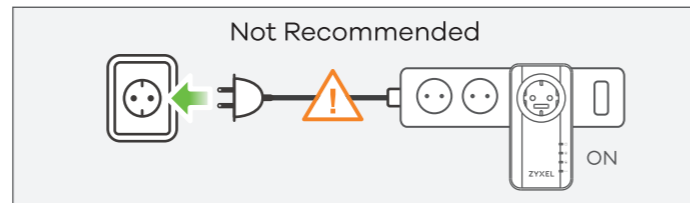
G.hn 2400 Mbps Wave 2 Powerline  
Pass-thru Gigabit Ethernet Adapter



**Quick Start Guide**

DANSK | NEDERLANDS | NORSK | SUOMI  
SVENSKA

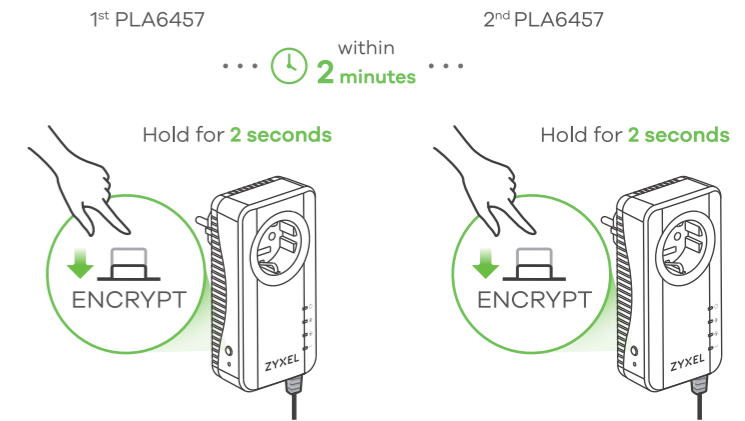
**1 Hardware Installation**



**2 Check LED Lights**

	<b>Green On</b> - Power is on. <b>Blinking</b> - Enter power saving mode. <b>Off</b> - Power off.
	<b>Green On</b> - More than 80 Mbps - Best. <b>Amber On</b> - 20 to 80 Mbps - Good. <b>Red On</b> - 0 to 20 Mbps - see Troubleshooting. <b>Off</b> - No connection between PLA devices. <b>Blinking</b> - Sending or receiving data to/from a connected PLA.
	<b>Green On</b> - Encrypted pairing mode. <b>Blinking</b> - Encrypt in processing. <b>Off</b> - No encrypted pairing.
	<b>Green On</b> - The Ethernet connection is up. <b>Blinking</b> - Sending/receiving data at 10/100/1000 Mbps. <b>Off</b> - Ethernet connection is not ready.

**Optional More Secure**



**Troubleshooting**

- If the power light does not come on, make sure the PLA is turned on.
- If an Ethernet light does not come on, please check the Ethernet cable.
- If the Powerline light does not turn on, this means there is no communications between PLA devices. This can be due to other PLA devices not being plugged in to electrical outlets yet, PLA device is possibly in low power mode or there is an issue on the power circuit. Make sure that the PLAs are on the same power circuit. Test by connecting PLAs into nearby outlets. Make sure that you do not have a power meter between them.
- To minimize interference, move PLAs away from high powered electrical devices such as refrigerators, air-conditioners, microwave ovens, etc.
- When securing the Powerline network, make sure not to press the **ENCRYPT** buttons on both PLAs for more than 5 seconds. If the process fails, press the **RESET** button on both PLAs over 10 seconds to reset to factory setting, then try to reconnect again.
- See the User's Guide for more troubleshooting tips.

**Warranty Card**



Thank you for purchasing a Zyxel product. Zyxel has a reputation for delivering high quality, high performance products and services to our customers. We recommend that you now visit the Zyxel website and register your product online. This will mean you can receive the latest firmware, drivers and product related information. If you still have further questions or enquiries related to the product, please contact our subsidiaries worldwide. Please note that warranty terms may vary by region. Full detailed information is available on our website, here: [http://www.zyxel.com/support/warranty\\_information.shtml](http://www.zyxel.com/support/warranty_information.shtml)

**Purchase Information**

Zyxel Product Name:

Hardware Serial Number:

Date of Purchase:

(In certain countries, the warranty will be validated with seller's signature and stamp):

- DK** For at opnå en bedre ydeevne anbefales det at sætte en PLA i en forlængerledning. Tilslut en PLA til en enhed for internetadgang og en anden til en enhed der kræver internet over lysnettet.
- NL** Voor betere prestaties wordt aanbevolen een PLA niet in een verlengsnoer te steken. Sluit een PLA aan op een apparaat voor internettoegang en een andere op een apparaat met internet via Powerline.
- NO** Av hensyn til ytelsen anbefales det ikke å plugge inn en PLA i en skjøteledning. Koble en PLA til en enhet for Internett-tilgang, og en annen til en enhet som skal ha Internett over strømmettet.
- FI** Laitteen parhaan suorituskyvyn varmistamiseksi suositellaan, ettei PLA-sovitinta kytketä jatkojohtoon. Koble en PLA til en enhet for Internett-tilgang, og en annen til en enhet som skal ha Internett over strømmettet.
- SE** För bättre funktion rekommenderar vi inte inkoppling av en PLA till en förlängningssladd. Anslut en PLA till en enhet för Internetåtkomst och en annan till en enhet som kräver Internet via Powerline.

- DK** Powerline-lyset viser hvor god din forbindelse, via lysnettet, er.
- NL** Het Powerline lampje geeft aan hoe goed uw Powerline aansluiting is.
- NO** Powerline-lampen angir hvor god strømmettforbindelsen er.
- FI** Powerline-merkkivalo ilmaisee, kuinka hyvä Powerline-yhteytesi on.
- SE** Powerline-lampan indikerar hur bra din Powerline- anslutning är.

**Support Information**

**EU**  
<https://support.zyxel.eu>

See the User's Guide at [www.zyxel.com](http://www.zyxel.com) for more information, including customer support and safety warnings.

**EU Importer**  
Zyxel Communications A/S  
Gladsaxevej 378, 2. th. 2860 Søborg, Denmark  
<https://www.zyxel.com/dk/da/>

**UK Importer**  
Zyxel Communications UK Ltd.  
2 Old Row Court, Rose Street, Wokingham,  
RG40 1XZ, United Kingdom (UK)  
<https://www.zyxel.com/uk/en/>

**US Importer**  
Zyxel Communications, Inc  
1130 North Miller Street Anaheim, CA 92806-2001  
<https://www.zyxel.com/us/en/>



**PLA6457**

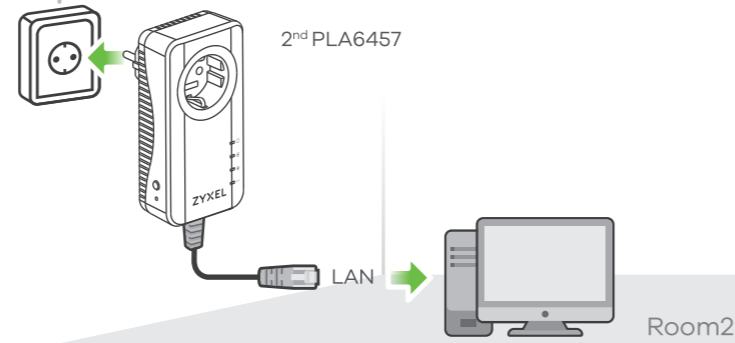
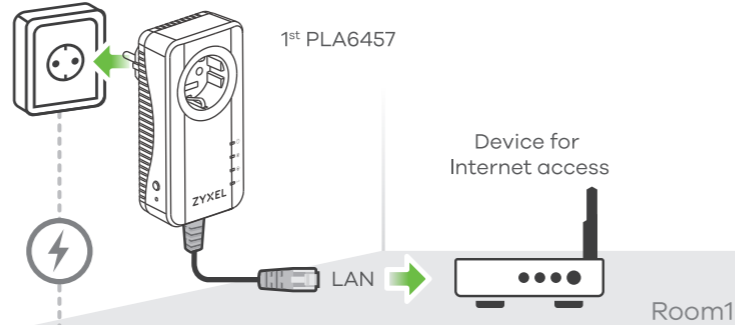
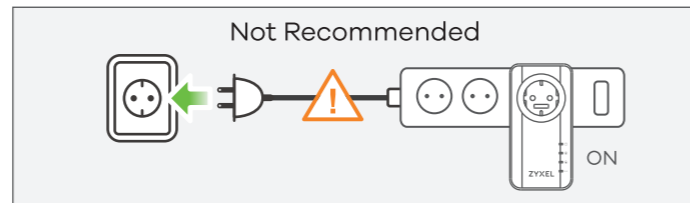
G.hn 2400 Mbps Wave 2 Powerline  
Pass-thru Gigabit Ethernet Adapter



**Quick Start Guide**

ČEŠTINA | MAGYAR | POLSKI | ROMÂNĂ  
SLOVENČINA

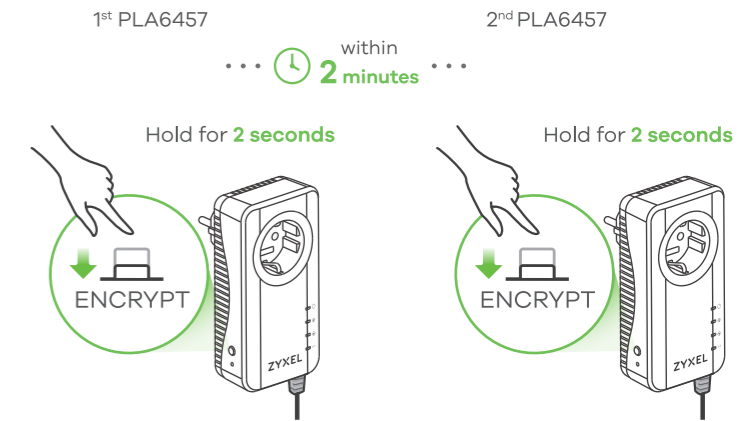
**1 Hardware Installation**



**2 Check LED Lights**

	<b>Green On</b> - Power is on. <b>Blinking</b> - Enter power saving mode. <b>Off</b> - Power off.
	<b>Green On</b> - More than 80 Mbps - Best. <b>Amber On</b> - 20 to 80 Mbps - Good. <b>Red On</b> - 0 to 20 Mbps - see Troubleshooting. <b>Off</b> - No connection between PLA devices. <b>Blinking</b> - Sending or receiving data to/from a connected PLA.
	<b>Green On</b> - Encrypted pairing mode. <b>Blinking</b> - Encrypt in processing. <b>Off</b> - No encrypted pairing.
	<b>Green On</b> - The Ethernet connection is up. <b>Blinking</b> - Sending/receiving data at 10/100/1000 Mbps. <b>Off</b> - Ethernet connection is not ready.

**Optional More Secure**



**Troubleshooting**

- If the power light does not come on, make sure the PLA is turned on.
- If an Ethernet light does not come on, please check the Ethernet cable.
- If the Powerline light does not turn on, this means there is no communications between PLA devices. This can be due to other PLA devices not being plugged in to electrical outlets yet, PLA device is possibly in low power mode or there is an issue on the power circuit. Make sure that the PLAs are on the same power circuit. Test by connecting PLAs into nearby outlets. Make sure that you do not have a power meter between them.
- To minimize interference, move PLAs away from high powered electrical devices such as refrigerators, air-conditioners, microwave ovens, etc.
- When securing the Powerline network, make sure not to press the **ENCRIPT** buttons on both PLAs for more than 5 seconds. If the process fails, press the **RESET** button on both PLAs over 10 seconds to reset to factory setting, then try to reconnect again.
- See the User's Guide for more troubleshooting tips.

**Warranty Card**



Thank you for purchasing a Zyxel product. Zyxel has a reputation for delivering high quality, high performance products and services to our customers. We recommend that you now visit the Zyxel website and register your product online. This will mean you can receive the latest firmware, drivers and product related information. If you still have further questions or enquiries related to the product, please contact our subsidiaries worldwide. Please note that warranty terms may vary by region. Full detailed information is available on our website, here: [http://www.zyxel.com/support/warranty\\_information.shtml](http://www.zyxel.com/support/warranty_information.shtml)

**Purchase Information**

Zyxel Product Name: \_\_\_\_\_

Hardware Serial Number: \_\_\_\_\_

Date of Purchase: \_\_\_\_\_

(In certain countries, the warranty will be validated with seller's signature and stamp):

- CZ** Z důvodu lepšího výkonu se nedoporučuje zapojovat adaptér PLA do prodlužovacího kabelu. Jeden adaptér PLA připojte do zařízení, které má mít přístup k internetu, a další do zařízení, které vyžaduje internet prostřednictvím adaptéru Powerline.
- HU** A jobb teljesítmény érdekében javasoljuk, hogy a PLA-t ne hosszabbítóba dugja. Csatlakoztasson egy PLA-t interneteléréssel rendelkező eszközhez, majd csatlakoztasson hozzá egy készüléket, aminek internetelésre van szüksége.
- PL** W celu uzyskania lepszej wydajności nie zalecamy podłączania adaptera PLA do przedłużacza. Podłącz jedno PLA do urządzenia zapewniającego dostęp do Internetu, a drugie do urządzenia wymagającego dostępu do Internetu przez linię energetyczną.
- RO** Pentru performante mai bune, se recomanda sa nu conectati un APL la un prelungitor pentru alimentare. Conectati un adaptor de retea electrica la un dispozitiv pentru acces la internet si un altul la un dispozitiv care necesita internet prin retea electrica.
- SK** Aby sa dosiahla lepšia cinnost, odporúča sa nepripájať PLA do sietovej napájacej predlžovacej šnúry. Pripojte jedno zariadenie s adaptérom pre elektrickú sieť k zariadeniu na získanie prístupu do internetu a druhé k zariadeniu, ktoré vyžaduje internet cez elektrickú sieť.

- CZ** Světelný indikátor Powerline označuje, jak kvalitní je připojení Powerline.
- HU** A Powerline fény jelzi, milyen jó a Powerline kapcsolat.
- PL** Światelko na wtyczce wskazuje na jakość połączenia przez linię energetyczną.
- RO** Lumina Powerline indică nivelul conexiunii rețelei dvs. electrice.
- SK** Indikátor na domovej zástrčke indikuje kvalitu pripojenia cez elektrickú sieť.

**Support Information**

**EU**  
<https://support.zyxel.eu>

See the User's Guide at [www.zyxel.com](http://www.zyxel.com) for more information, including customer support and safety warnings.

**EU Importer**  
Zyxel Communications A/S  
Gladsaxevej 378, 2. th. 2860 Søborg, Denmark  
<https://www.zyxel.com/dk/da/>

**UK Importer**  
Zyxel Communications UK Ltd.  
2 Old Row Court, Rose Street, Wokingham,  
RG40 1XZ, United Kingdom (UK)  
<https://www.zyxel.com/uk/en/>

**US Importer**  
Zyxel Communications, Inc  
1130 North Miller Street Anaheim, CA 92806-2001  
<https://www.zyxel.com/us/en/>



**PLA6457**

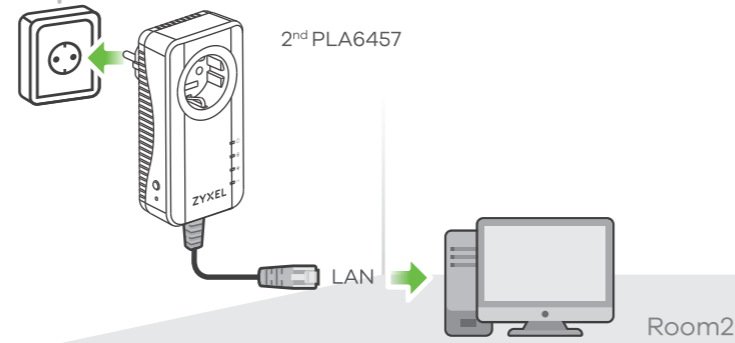
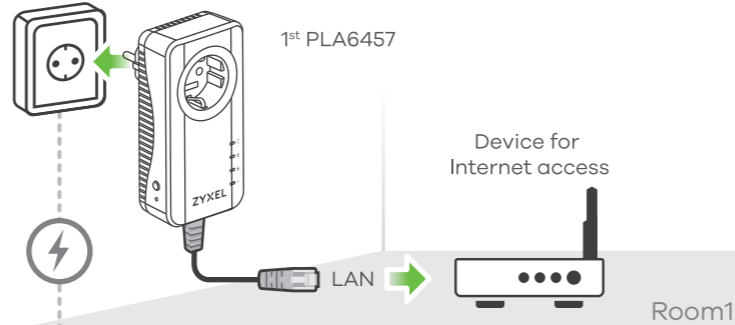
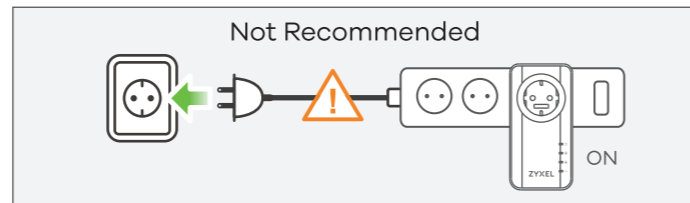
G.hn 2400 Mbps Wave 2 Powerline  
Pass-thru Gigabit Ethernet Adapter



**Quick Start Guide**

SLOVENŠČINA | БЪЛГАРСКИ | РУССКИЙ  
УКРАЇНСЬКА | TÜRKÇE

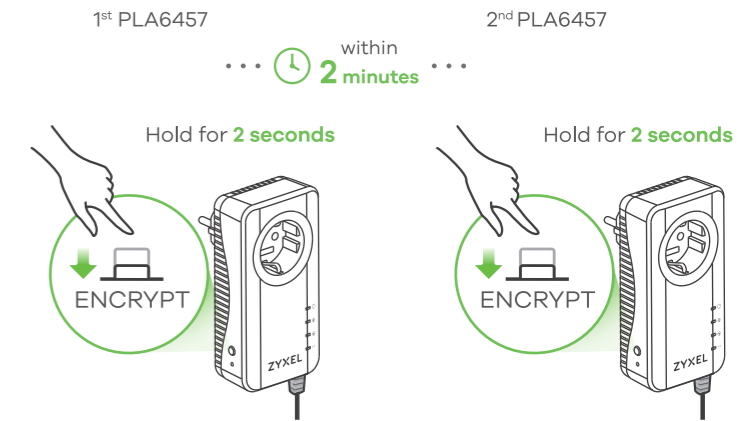
**1 Hardware Installation**



**2 Check LED Lights**

	<b>Green On</b> - Power is on. <b>Blinking</b> - Enter power saving mode. <b>Off</b> - Power off.
	<b>Green On</b> - More than 80 Mbps - Best. <b>Amber On</b> - 20 to 80 Mbps - Good. <b>Red On</b> - 0 to 20 Mbps - see Troubleshooting. <b>Off</b> - No connection between PLA devices. <b>Blinking</b> - Sending or receiving data to/from a connected PLA.
	<b>Green On</b> - Encrypted pairing mode. <b>Blinking</b> - Encrypt in processing. <b>Off</b> - No encrypted pairing.
	<b>Green On</b> - The Ethernet connection is up. <b>Blinking</b> - Sending/receiving data at 10/100/1000 Mbps. <b>Off</b> - Ethernet connection is not ready.

**Optional More Secure**



**Troubleshooting**

- If the power light does not come on, make sure the PLA is turned on.
- If an Ethernet light does not come on, please check the Ethernet cable.
- If the Powerline light does not turn on, this means there is no communications between PLA devices. This can be due to other PLA devices not being plugged in to electrical outlets yet, PLA device is possibly in low power mode or there is an issue on the power circuit. Make sure that the PLAs are on the same power circuit. Test by connecting PLAs into nearby outlets. Make sure that you do not have a power meter between them.
- To minimize interference, move PLAs away from high powered electrical devices such as refrigerators, air-conditioners, microwave ovens, etc.
- When securing the Powerline network, make sure not to press the **ENCRIPT** buttons on both PLAs for more than 5 seconds. If the process fails, press the **RESET** button on both PLAs over 10 seconds to reset to factory setting, then try to reconnect again.
- See the User's Guide for more troubleshooting tips.

**Warranty Card**



Thank you for purchasing a Zyxel product. Zyxel has a reputation for delivering high quality, high performance products and services to our customers. We recommend that you now visit the Zyxel website and register your product online. This will mean you can receive the latest firmware, drivers and product related information. If you still have further questions or enquiries related to the product, please contact our subsidiaries worldwide. Please note that warranty terms may vary by region. Full detailed information is available on our website, here: [http://www.zyxel.com/support/warranty\\_information.shtml](http://www.zyxel.com/support/warranty_information.shtml)

**Purchase Information**

Zyxel Product Name: \_\_\_\_\_

Hardware Serial Number: \_\_\_\_\_

Date of Purchase: \_\_\_\_\_

(In certain countries, the warranty will be validated with seller's signature and stamp):

- SL** Zaradi boljšega delovanja je priporočeno, da PLA ne vklopite v kabelski podaljšek. Povežite en vmesnik PLA na napravo za internetni dostop in drug vmesnik PLA na napravo, ki poveže internetni dostop prek napajalnega voda.
- BG** За по-добра работа се препоръчва да не се включва PLA в удължител. Свържете един PLA към устройство с интернет достъп и друг към устройство, изискващо интернет достъп по захранваща линия.
- RU** Для лучшей производительности не рекомендуется подключать PLA-адаптеры к сетевым фильтрам или удлинителям. Подключите один PLA-адаптер к устройству с доступом в Интернет, например к маршрутизатору. Подключите другой PLA-адаптер к устройству, которому требуется Интернет через электросеть.
- UA** Для кращої продуктивності не рекомендується підключати PLA-адаптери до мережних фільтрів або подовжувач. Підключіть один PLA-адаптер до пристрою з доступом в Інтернет, наприклад до маршрутизатора. Підключіть інший PLA-адаптер до пристрою, з яким потрібно Інтернет через електромережу.
- TR** Daha iyi performans için, bir PLA'yı güç uzatma kabloşuna bağlamamanız önerilir. Yönlendirici gibi İnternet erişimi için bir cihaza bir PLA bağlayın. Diğer PLA'yı, Powerline üzerinden İnternet gerektiren bir cihaza bağlayın.

- SL** Svetilka Powerline označi, kako dobra je povezava prek napajalnega voda.
- BG** Лампата Powerline показва колко добра е Вашата връзка по захранваща линия.
- RU** Индикатор Powerline показывает качество соединения по электросети.
- UA** Індикатор Powerline показує якість з'єднання по електромережі.
- TR** Powerline ışığı, Powerline bağlantınızın ne kadar iyi olduğunu gösterir.

**Support Information**

**EU and Russia**  
<https://support.zyxel.eu>

See the User's Guide at [www.zyxel.com](http://www.zyxel.com) for more information, including customer support and safety warnings.

**EU Importer**  
Zyxel Communications A/S  
Gladsaxevej 378, 2. th. 2860 Søborg, Denmark  
<https://www.zyxel.com/dk/da/>

**UK Importer**  
Zyxel Communications UK Ltd.  
2 Old Row Court, Rose Street, Wokingham,  
RG40 1XZ, United Kingdom (UK)  
<https://www.zyxel.com/uk/en/>

**US Importer**  
Zyxel Communications, Inc  
1130 North Miller Street Anaheim, CA 92806-2001  
<https://www.zyxel.com/us/en/>

